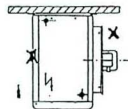
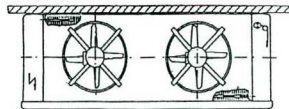


# Position of the PT1000/PTC Coil Sensor.

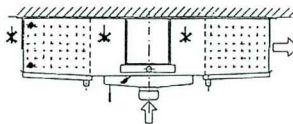
SG Coolers.

For Electric Defrost

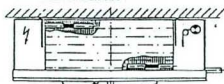


For Gas Defrost  
& Off Cycle Defrost

DZ Coolers.



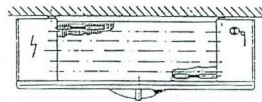
For Electric Defrost



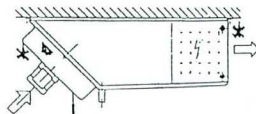
For Gas Defrost  
& Off Cycle Defrost

DE Coolers.

For Electric Defrost



For Gas Defrost  
& Off Cycle Defrost



Coil Sensor Tube.



Top Position is for Electric Defrost &  
Bottom Position for Gas & Off Cycle Defrost.

Air On Sensor.

Correct.



Incorrect.



Refrigeration  
Connections.

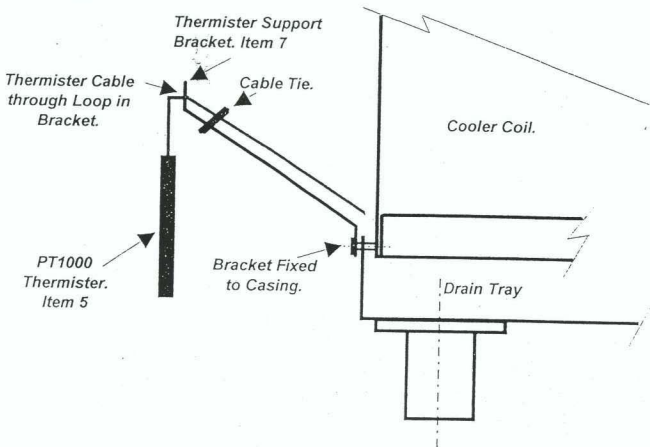


Defrost Heater  
Connections.



# Correct Location and Support of Air On Sensor.

(SG Cooler)



*Steel Casing of Thermister MUST NOT be in contact with any metallic surface.*

*Support Bracket Supplied must be used.*

*Air Sensor to be Located on Air On Side of Cooler at a Mid Point.*